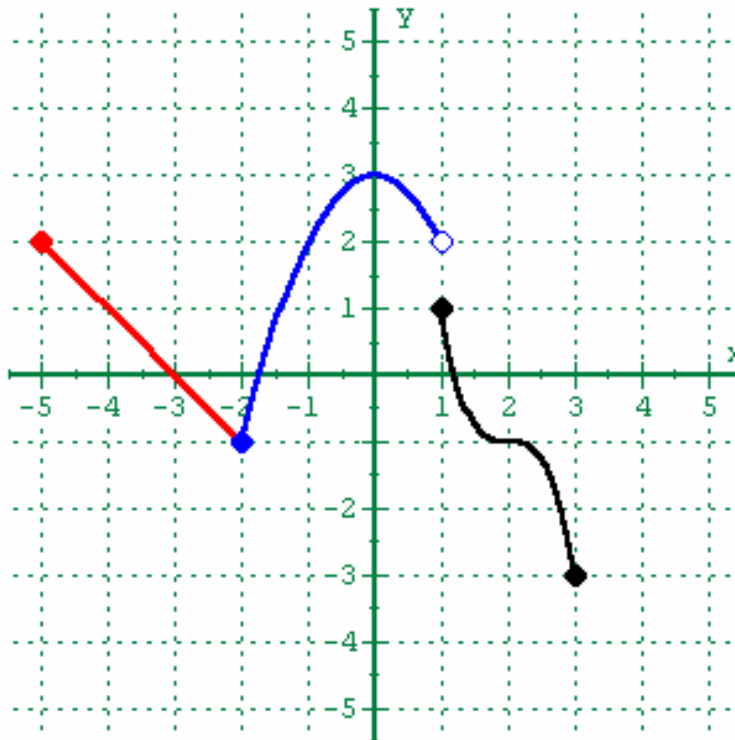


Piecewise-Defined Functions 2



$$f(x) = \begin{cases} & \text{for} \\ & \text{for} \\ & \text{for} \end{cases}$$

- Find $f(-4)$
- $f(-2)$
- $f(0)$
- $f(1)$

Find the x-intercept(s)

Find the y-intercept(s)

- Domain:
- Range:
- Maximum:
- Minimum

- Find the Interval(s) on x where the function is:
- Increasing:
- Decreasing:
- Constant: